

<p><b>How the Pavilion was funded:</b></p> <p>The total cost of designing, building and equipping the new Edlesborough Pavilion was £1,173,975.</p> <p>EPC is most grateful for the tremendous financial support from AVDC without which the new Pavilion would not have been possible.</p>	Funder	£
	AVDC's New Homes Bonus Board	350,000
	AVDC S106 (contribution from developers of new houses in Edlesborough)	334,000
	EPC – Special Projects – funds built-up over past years	198,375
	EPC – a loan repayable over 30 years to the Public Works Loan Board	175,000
	ECSC and its donors	93,600
	Sport England (specifically for the lift)	22,000
	EB Lions	500
	Edlesborough Cricket Club	500
	<b>TOTAL</b>	<b>1,173,975</b>

### Management & Operation of the New Pavilion

EPC has given a 25 years' lease to ECSC (a registered charity), to manage and operate the new Pavilion for the benefit of all Edlesborough Parish residents – who will be eligible for free membership (adults 18 and over).

If you haven't already taken up membership, please go to  
<https://escomembers.azurewebsites.net/>

ECSC has appointed Duncan McClelland as the Club's Chef-Patron and he commenced working full time on Monday 25th October 2021.

He is also responsible for the organisation of the Pavilion and the wellbeing of members.



Duncan has over 20 years' experience working in the hospitality industry. He was classically trained under the Roux dynasty and excelled at working in some of London's finest restaurants. Duncan's ethos is a simple one but also extremely close to his heart - supporting local producers and ensuring we look after our community by bringing families and friends together using the power of sustainably sourced quality food.

He looks forward very much to welcoming you to our fantastic Pavilion.

\*\*\*\*\*

# Edlesborough Pavilion

## NOW OPEN!



**Edlesborough Parish Council is delighted to announce that the new Edlesborough Pavilion is now open!**

This project originated in 2012 when EPC began consultations on what was to be done with the old, 'unfit for purpose' and unsightly pavilion.

A vision was gradually developed for a new building which would not only provide first class sports facilities but would also provide excellent amenities for the wider community to use.

The Pavilion Working Party evolved into the Edlesborough Community Sports Club (ECSC) which worked closely with EPC in developing the building plans and raising the necessary funds to pursue the shared dream!

Although the fund raising took much longer than anticipated, work finally started on-site in October 2019. COVID then caused many delays but we now - finally - have a lovely, high quality and extremely well equipped building which will be a tremendous asset for the Parish for many years to come.





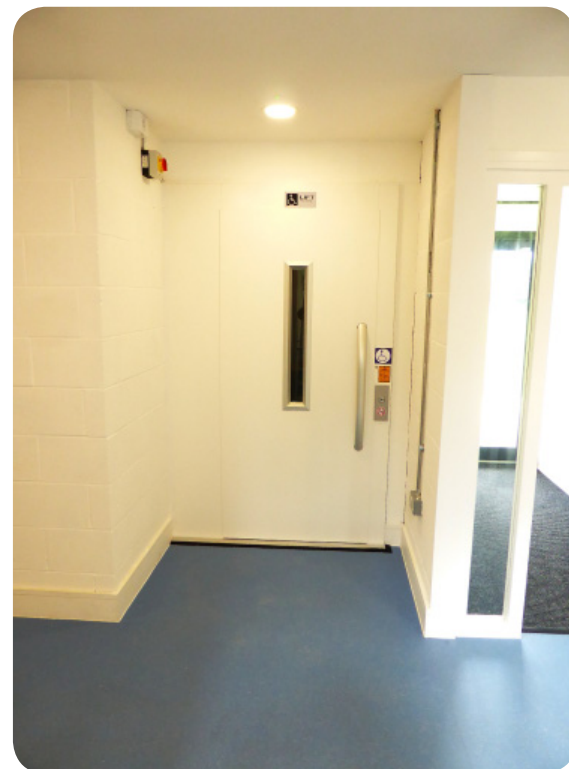
*A super Gym with ten pieces of the latest equipment*



*2 changing rooms each with 3 showers and 2 toilets (with removable wall opened)*



*Changing rooms showing removable wall to create a larger activity space*



*Lift for wheel chair user & carer or 4 people*



*Community Hub Club room with bar, catering and 2 TVs for Sky Sports. Access to balcony with its wonderful views over the Green*



*Additional Pavilion facilities include: Officials/ treatment room; wheel chair accessible toilet & shower; toilets on ground & first floors; club manager's office; servery; parking for 28 cars; enclosure for goal posts etc. & other storage rooms*

*'Buy a Brick' displayed on the staircase wall. Bricks still available for sale!*



*Meeting /Seminar/Card room with 2 TVs/monitors*

