

EDLESBOROUGH PARISH  
ANNUAL PARISH MEETING  
25th May 2023

Parish Council Key Activities  
June 22 – May 23

# Parish Council Highlights June 22 – May 23

- Freight Strategy
- Small grant scheme
- MVAS, Finally!
- 20mph project
- Masts
- Pavilion Building Contract
- Memorial Hall project
- Playground project approved November 22
- New Local Plan for Buckinghamshire
- John Wilkinson 25th year as a councillor
- New EPC chairperson
- New EPC vice-chairperson

- Chair Rosie Booth



vice-chair Trish Owen

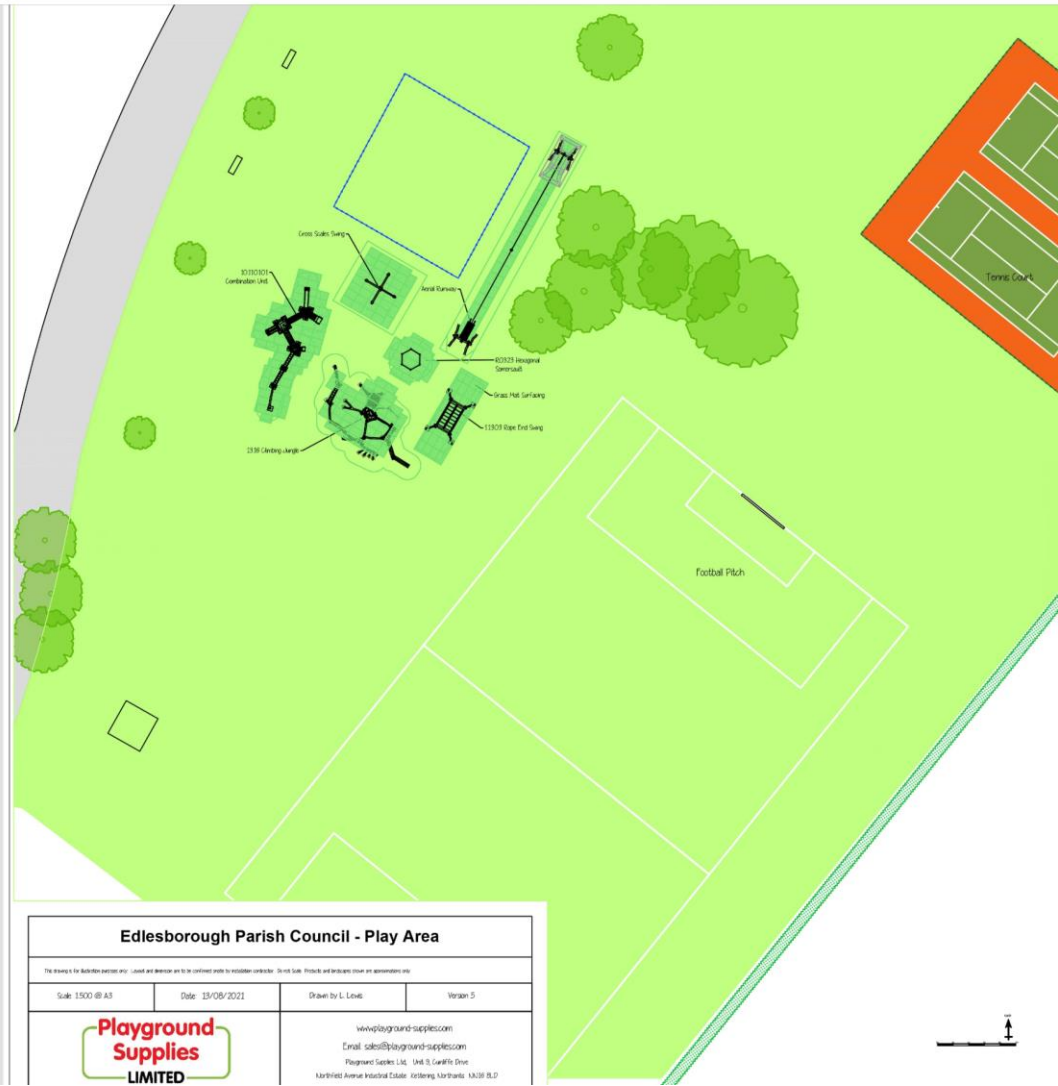


# Parish Council Key Highlights

## June 23 – May 24

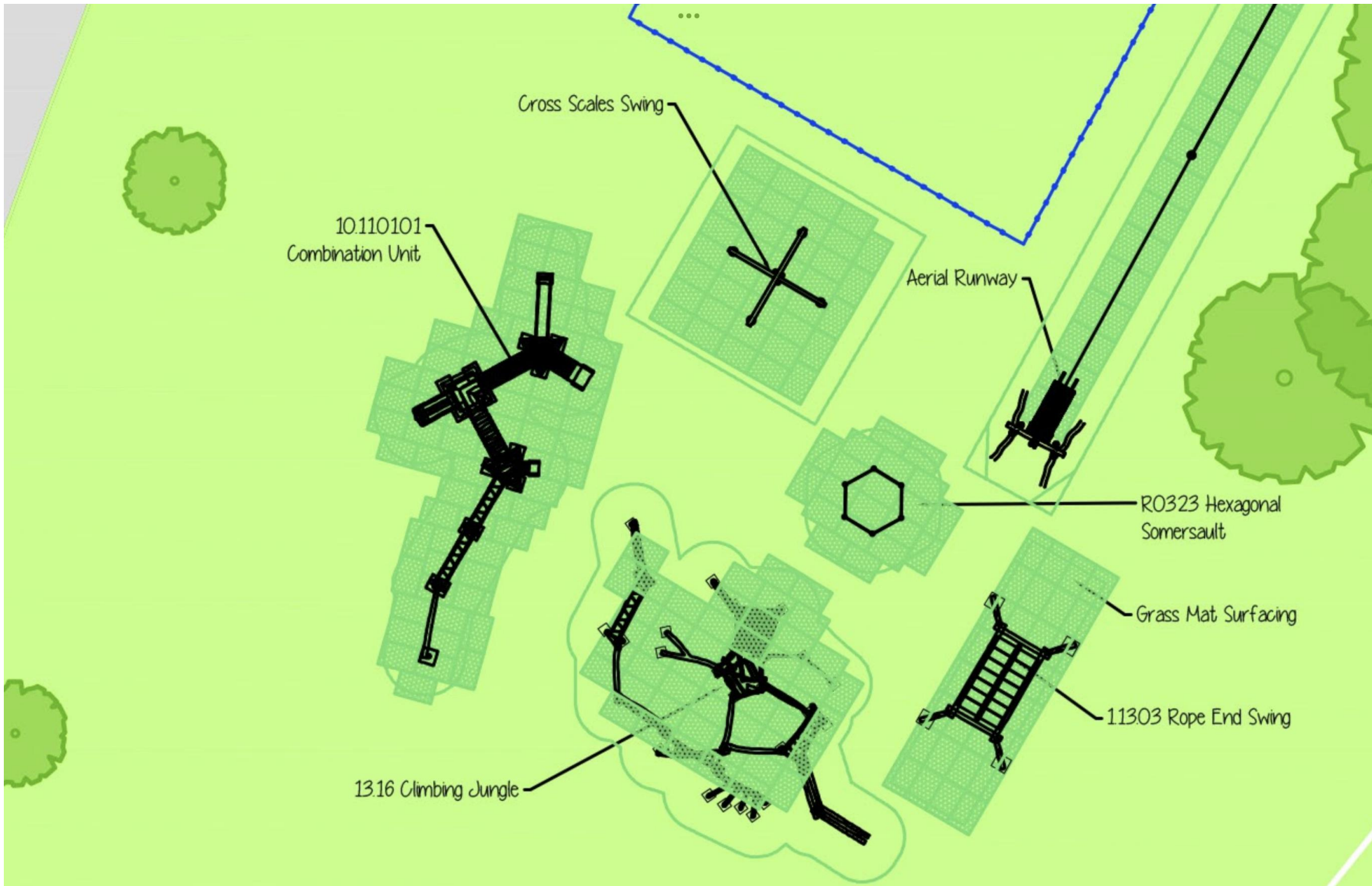
- 20mph decision South End Lane
- Buckinghamshire Local plan continues to 2025 and beyond
- Future of the Memorial Hall- public meeting
- New playground installation September/October
- Speedwatch Re-launch

# Playground extension



# Zipwire





10.110101  
Combination Unit

Cross Scales Swing

Aerial Runway

R0323 Hexagonal  
Somersault

Grass Mat Surfacing

11303 Rope End Swing

13.16 Climbing Jungle



[www.communityspeedwatch.org](http://www.communityspeedwatch.org)



# Speedwatch re-launch

- **SPEEDWATCH IS COMING HOME!... with your help!**
- Edlesborough Parish Council pioneered the use of Speedwatch video cameras in Buckinghamshire almost 10 years ago.
- Over time, the regulations covering speed management changed
- Speedwatch took a lower priority.
- Now the deployment of MVAS speed activated signs
- Now -renewed police support for CommunitySpeedwatch
- Nowf we have the opportunity to re-launch CommunitySpeedwatch in our parish.

# What is Community speedwatch?

- The scheme is managed by Thames Valley Police, promoted by Buckinghamshire Council, supported by EPC, and delivered by volunteers.
- Locations for monitoring speed are selected from sites suggested by the community, based on where there is most local concern about speeding traffic, or the impact of speed.
- Community Speedwatch operates in areas subject to a speed limit no greater than 40mph, so our parish is well covered.
- The registration numbers of speeding vehicles are recorded.
- Warning letters are then sent out by Thames Valley Police to the registered keepers stating that their vehicle has been reported as speeding.
- The first letter is a warning letter. The second is a stronger letter. If Speedwatch activity evidences a speed problem, this may result in enforcement by the Police.
- Speedwatch operates across the entire TVP area monitoring the speed of vehicles.

# What do we need?

- We have the endorsement and financial support to set it up.
- We have the video equipment.
- We have the Hi-Vis jackets.
- We have the warning signs.
- We are prepared to get more signage to identify our parish as a Speedwatch location.
- We have trainers ready to train parishioners to use the equipment.
- **We need volunteers!**

**QUESTIONS?**